



# PEMBERTON TOUR & INFORMATION GUIDE

In the Heart of the Southern Forests Region ~ [www.PembertonWA.com](http://www.PembertonWA.com)

## WINERIES & RESTAURANTS

	Loc	Hours	Tasting	Lunch	Coffee
10 Chains ☎0488 183 770	M15	10-5pm Fri - Sun & by Appointment	✓		
Donnelly River Winery ☎9776 2018	D3	10am-5pm 5 days	✓		✓
Hidden River Estate ☎9776 1437	I11	10am - 4pm Wed-Sun	✓	✓	✓
Hillbrook Wines ☎9776 7202	L15	12-5pm Sat & Sun & Public Hols Winter by Appointment	✓		
Jarra Jacks Brewery & Slippery Hill Estate Wines ☎9776 1333	I10	12-6 Summer 11-5 Winter Open Thurs-Sun School Hols 6 Days	✓	✓	✓
Jaspers Whisky Bar <a href="http://www.jasperspemberton.com">www.jasperspemberton.com</a>	T4	Opening soon To Confirm	✓	✓	✓
Lost Lake Wines ☎9776 1251	G14	11am-4pm Sat-Sun	✓		
Mountford Winery & Gallery ☎9776 1345	F9	Fri - Mon 10am - 4pm S/Hol 7 days	✓		
Pemberton Hotel Bottle Shop ☎9776 1017	T5	10am-10pm Mon-Sat 12-8pm Sun	Sales only		
Pemberton Liquor Barons ☎9776 1161	T4	10am-7pm Mon-Sat	Sales only		
Silkwood Wines & Restaurant ☎9776 1535 or ☎9776 1584	H7	10am - 4pm Fri - Mon	✓	✓	✓
Southern Forest Cider Co ☎9776 1251	G14	11am-4pm Sat-Sun	✓		
Tangletoe Cidery ☎9776 1345	F9	Fri - Mon 10am - 4pm S/Hol 7 days	✓		
Treehouse Tapas & Wine ☎9776 1654	T4	Wed-Fri 4pm-10pm Sat 2pm-10pm Sun 2pm-9pm S/Hol 7 days			
Truffle & Wine Co ☎9777 2474	B12	Open 7 Days Cellar Door 10-4pm Lunch from 11am	✓	✓	✓
Woodgate ☎0412 027 992	A12	10.30-4.30pm Thurs-Sat 12.30-4.30pm Sun Appointments Welcome Mon-Wed	✓		

Not listed - but other local wines to try at local restaurants and shops:  
Bellarmine ~ Below & Above ~ Pemberley ~ Picardy ~ Rambouillet

## RESTAURANTS & CAFES

	Loc	Hours	Bfast	Lunch	Dinner	Coffee
Atlas Fish & Chips ☎9776 0662	S5	4-8pm Tue-Sat			✓	
Bannister Downs Dairy ☎9776 4555 (Northcliffe)	R15	Open early 2019		✓		✓
Café Brazil ☎9776 0889	T4	6-5pm Mon - Sat 7-4pm Sun	✓	✓	✓	
Café Mazz (Pemberton Hotel) ☎9776 1017	S5	7am daily	✓	✓	✓	✓
Café & Providore ☎0419 039 777	T3	Open early 2019	✓	✓	✓	✓
The Crossings Bakery ☎9776 1411	U3	8 am-3 pm Mon - Sat S/Hol 7 Days		✓		✓
Fairweather Dairy Bar ☎0447 165 814	S3	10am-5pm Sat & Sun & S/Hols & other Fine Days		✓		
Firey India Restaurant	S5				✓	
Fonty's Pool ☎9771 2105	C11	9am-5pm Function Venue		BYO Picnic Lunch Groups & Wedding Functions		✓
Forest Fresh Marron ☎9776 0059 / 0428 887 720	T1	10.30-4.30pm Mon-Fri		Live Marron for sale Loan Pots / Travel packs available		
Forest Lodge Resort ☎9776 1113	J11	Breakfast Bookings Function Venue	✓		Groups & Weddings	
Hollow Butt Café ☎9776 6050 (Northcliffe)	R13	Open Daily 8am-2/3pm *Closed Sun Winter	✓	✓		✓
Holy Smoke Café ☎9776 0712	V4	9.30-4.30pm 7 days	✓	✓	Pre-order Platters	✓
Kingsley Motel & Cabernet Restaurant (Manjimup) ☎9771 1177	A14	Open Daily	Tue-Fri 6.30-8.30am	Bookings Essential	Mon-Fri from 5.30pm	
Lakeside Restaurant (RAC Karri Valley Resort) ☎9776 2020	H5	Open Daily Function Venue	✓	✓	✓	✓
Lavender & Berry Farm Café ☎9776 0395	I12	Open Wed - Sun 9.30am - 4pm S/Hols 7 days	✓	✓	✓	✓
Manjimup Gateway Motel ☎9777 1053	A14	Open Wed-Mon		Fri-Sun	✓	From 9am
Old Vasse Trout & Marron Farm ☎9776 1726	L9	Open Fri-Sun S/Hols 7 days Winter by Appt			✓	✓
Pemberton General Store ☎9776 1151	T4	7 Days 7.30am - 7.30pm			✓	✓
Pemberton Hotel (Bar) ☎9776 1017	S5	Open Mon-Fri from 11am Sat from 10am & Sun from 12noon		✓	✓	✓
Pemberton Sports Club ☎9776 1066	T2	Bar open from 4pm Tue - Sat			*Conditions Apply Functions & Catering	
Pemberton Sports Club Alice's Kitchen ☎049 894 0580	T2	Wed - Sat Meals from 5.30pm Wed-Sat			*Conditions Apply Functions & Catering	
Quinninup Tavern & Restaurant - Reborn ☎0428 820 305	I17	Opening in 2019				
Sage Café ☎0488 476 063	T4	Wed-Sun 5pm-8.30pm		✓	✓	✓
Silkwood Wines & Restaurant ☎9776 1535	H7	10am - 4pm Fri - Mon		✓		✓
Southern Roasting Co ☎0491 048 058 (Manjimup)	A14	6.30am-5pm Mon-Fri 7am-2pm Sat	✓	✓		✓
Tall Timbers ☎9777 2052 (Manjimup)	A14	7 Days 11am-late Mon-Fri 8am-late Sat-Sun	✓	✓		Bookings ✓
Treehouse Tapas & Wine ☎9776 1654	T4	Wed-Fri 4pm-10pm Sat 2pm-10pm Sun 2pm-9pm		✓	✓	✓
Truffle and Wine Co ☎9777 2474 (Manjimup)	B12	7 Days 10am - 4pm Lunch from 11am			Bookings Essential	✓

No Restaurants? No Problem! Look for the Pinot Noir Picnic - We have plenty of scenic picnic spots!

## TOURS & ACTIVITIES

Departure Time	Tour Name	Loc	Availability
Daily	Purchase your National Park Pass and head into the Southern Forests for some exploring and tree climbing!		
From 7am	Bibbulmun Track & Munda Biddi Trail Transfers	U3	Bookings Essential ☎9776 0484
Daily	People & Parcel Movers *charters, tours & taxi style services		☎0448 544 784
Daily	Manjimup People Movers *charter service		☎0488 333 695
Open Daylight Hours	Pemberton Golf Club * Honour System at Clubhouse	I11	Green fees payable @ club. BYO Clubs
Early start	Birding South West Bird watching tours (1/2 day & full day tours)	T4	Bookings Required ☎0428 345 245
Daily	Pemberton Mountain Bike Park Pemberton Forest Park	S3	Open Daylight 7 days ☎9776 1133
From 8.00am	Mountain Bike Hire	U3	Bookings Required ☎9776 0484
From 8.30am	Karri Valley Resort Minigolf ~ Canoeing ~ Bikes School Holiday Activity Program	H5	Daily until 5.30pm ☎9776 2020
8am - 4pm	Pemberton Hydro Energy Station Interactive Display	S2	Daily from 8am ☎9776 1133
8.30am Saturday	Yoga <a href="http://www.bewithgwen.com">www.bewithgwen.com</a>	T2	@ Sportsclub ☎0419 774 323
8.30am Summer 9am Winter	Pemberton Hiking & Canoeing (1/2 day tour)	L8	Daily ☎9776 1559
8.50am	Donnelly River Cruise 1/2 day tour-see 1.20pm for other days	T4	Sun, Tues, Thurs, Fri Bookings Essential ☎9777 1018
9am	Pemberton Discovery Tours Beach & Forest Eco Adventure (1/2 day tour) (Available as a Tag along option)	U3	Bookings Essential ☎9776 0484
9am (Dec-May)	Pemberton Discovery Tour Black Point Eco Adventure (Full day tour)	U3	Bookings Essential ☎9776 0484
9am	Understory Art & Nature Trail (Located @ Northcliffe Visitor Centre)	R13	9am-4pm Daily ☎9776 7203
9.30am - 4.30pm	Pemberton Museum & Karri Forest Discovery Centre (Located @ the Pemberton Visitor Centre)	T4	Open 7 days ☎9776 1133
9.30am - 4.30pm	Tennis Court Hire (from the Pemberton Visitor Centre)	T4	Open 7 days ☎9776 1133
10am	Northcliffe Pioneer Museum & George Gardiner Gemstone Collection	R13	10am-3pm Daily ☎9776 7203
10am	Tales of the Trail Western Ranch 1 or 2 hour horse ride	K16	Bookings Essential ☎0427 478 828
10.45am	Pemberton Tramway Company Warren Bridge 1 <sup>st</sup> Hr Tram Tour	S4	Mon - Sat ☎9776 1322
Winter	Truffle & Wine Co Truffle Hunting Tour Experience June, July & August	B12	Bookings Essential ☎9777 2474
1pm	Tales of the Trail Western Ranch 1, 2 or 3 hour horse ride	K16	Bookings Essential ☎0427 478 828
1pm	Pemberton Wine Discovery Tour Collection from Accommodation	U3	Bookings Essential ☎9776 0484
1.20pm	Donnelly River Cruise 1/2 day tour-See 9am for other days	T4	Sat, Mon, Wed Bookings Essential ☎9777 1018
2pm	Pemberton Discovery Tours Beach & Forest Eco Adventure 1/2 day tour	U3	Bookings Essential ☎9776 0484
2pm	Pemberton Hiking & Canoeing 1/2 day tour	L8	Bookings Essential ☎9776 1559
2pm	Pemberton Tramway Company Warren Bridge 1 <sup>st</sup> Hr Tram Tour	S4	Mon - Sat ☎9776 1322
5pm	Pemberton Hiking & Canoeing Night Canoe Tour	L8	Bookings Essential ☎9776 1559
Late Afternoon Walk	Bugs in the Bush Seasonal ~ Northcliffe Visitors Centre	R13	Bookings Essential ☎9776 7203
4.30pm Winter 5.30pm Summer	Pemberton Walking Tours Town 1 Hour Walking Tour	T3	Bookings Essential ☎0447 165 814
Evening Walk	Frogs in the Northcliffe Forest Park Seasonal ~ Northcliffe Visitors Centre	R13	Bookings Essential ☎9776 7203

### TAG PEMBERTON IN YOUR INSTA-PICS

#VisitPemberton #PembertonWA #southernforests  
#pembertonaustralia #karricountry #southwestedge  
#australiassouthwest #experienceextraordinary  
#KissMyHass #PemblyAvoSmash #GloucesterTree  
#PembertonWine @Pemdise @Pemberton-Australia

## LOCAL EVENTS\*

Pemberton Mill Hall Markets (venue for hire) - 3 x year  
CWA Markets - Last Sat of the month & Op shop every Saturday  
26 January - Australia Day Breakfast & Celebrations  
Feb/March (Long Weekend) - Pemberton Classic (Road Cycle Event)  
March - Karri Valley Triathlon, Pemberton  
Easter - Pemberton Arts Group "Annual Exhibition"  
April - Relentless Blue XCO Mountain Bike event  
April - WAGE Gravity Enduro Mountain Bike, Pemberton  
Late April - Northcliffe Karri Cup (Mountain Bike Event)  
Late April/Early May - Unearthed Pemberton Festival  
May - Targa South West Rally  
Last June Weekend - Truffle Kerfuffle, Manjimup  
Sept-Nov - Blooming Wild Festival  
Sept - Kinkin Retreat Ute, Truck & Tractor Muster  
Queens Birthday LWE - Pemberton Arts Group "Annual Art Prize"  
Sept/Oct - Manjimup Blue Grass & Old Time Music Weekend  
Sept/Oct - Quinninup Annual Market Day  
Oct - Pemby Trail Fest (Perth Trail Runners)  
Oct/Nov - PDMBC Club Gravity Series, (Mountain Bike Event), (R4)  
From Dec - Seasonal Avo Smash - Pemberton Avocado Trail  
Dec (2nd weekend) - Cherry Harmony Festival  
31st December - New Years Eve Fireworks at the Pemberton Hotel  
\*Contact Visitor Centres for more detail

## GALLERIES & CRAFTS

	Loc	Address	Opening Hours
LJ Hooker & Gallery ☎9776 0000	T4	Brockman St	9-5pm Mon-Fri 9am - 1pm Sat
Mountford Gallery ☎9776 1345	F9	Barness Rd	Fri - Mon 10am - 4pm S/Hol 7 days
The Painted Tree Gallery ☎9776 7203	R13	@ Northcliffe Visitor Centre Northcliffe	Open 7 days 9am - 4pm
Pemberton Fine Woodcraft Gallery ☎9776 1741	V4	Dickinson St	Open 7 days 9am - 5pm
Peter Kovacs Studio ☎0402 864 651	S7	Jamieson St	Please call to confirm opening times on the day
Treasures in the Forest ☎9776 1784	T4	Brockman St	9-5.30pm Mon-Fri 9am - 5pm Sat 10.30am-2pm Sun
Understory - Art in Nature ☎9776 7203	R13	@ Northcliffe Visitor Centre Northcliffe	Open 7 days 9am - 4pm (Audio tour last entry 3pm)

Are markets your thing? The CWA Markets are held in town on last Saturday of the month  
Manjimup Farmers Markets held on the 1st & 3rd Saturday ~ 8.30am - 12 noon

## MORE SHOPPING...

	Loc	Address	Opening Hours
Abundant Health ☎0414 263 503	T5	Ellis St (behind Post Office)	Monday - Wednesday From 10am
Holy Smoke Café ☎9776 0712	V4	Fine Woodcraft Gallery Dickinson St	Open 7 days 9.30am - 3.30pm
Lavender & Berry Farm ☎9776 0395	I12	Browns Rd	Café Open 9.30am - 4pm Wed - Sun School Holidays 7 days
Pemberton Garage ☎9776 1288	S5	Brockman St	7am - 1pm Mon-Fri 8am - 1pm Sat 8am - 11am Sun & P/Hols
Pemberton General Store & Hardware ☎9776 1151	T4	Brockman St	Open 7 days 7.30am - 7.30pm
Pemberton Pharmacy & Treasures of the Forest ☎9776 1054	T4	Brockman St	9 - 5.30pm Mon - Fri 9am - 5pm Sat 10.30am - 2pm Sun *Restricted pharmacy service Sat & Sun
Pemberton Post & Newsagency ☎9776 1034	T5	Brockman St	Open 7 days 8am - 5pm Mon-Fri 8am - 1pm Sat 8am - 11am Sun & P/Hols
Pemberton Visitor Centre ☎9776 1133	T4	Brockman St	Open 7 days Winter 9.30am - 4pm Summer 9am - 5pm

Seasonal Roadside Farm & Produce Stalls (Marked on map) 📍



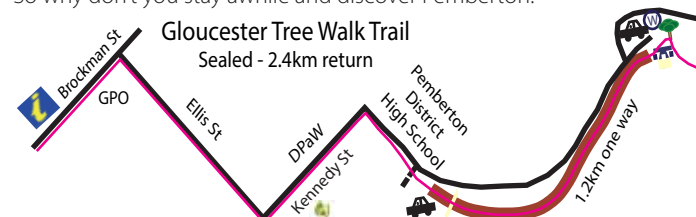
Discover the hidden treasures of Pemberton and the Southern Forest region with experiences not found elsewhere on this planet.

From sculptural nature trails to immense sand dunes, mammoth climbing trees to safe inland beaches, protected virgin Karri forests to pristine rivers and meandering winter creeks.

Indulge in genuine Southern Forests food & wine and see the forests through the eyes of a local guide.

Whether you choose to stay in luxury or decide to camp, these are memories you will treasure forever.

So why don't you stay awhile and discover Pemberton!



### Limited time? Want to stretch your legs?

These mud maps offer you bike, wheelchair and pram friendly trails. For further options check out the "Have You Discovered" list overleaf.

\*\*Both walks provide free gas BBQ facilities with picnic tables and sheltered picnic areas.



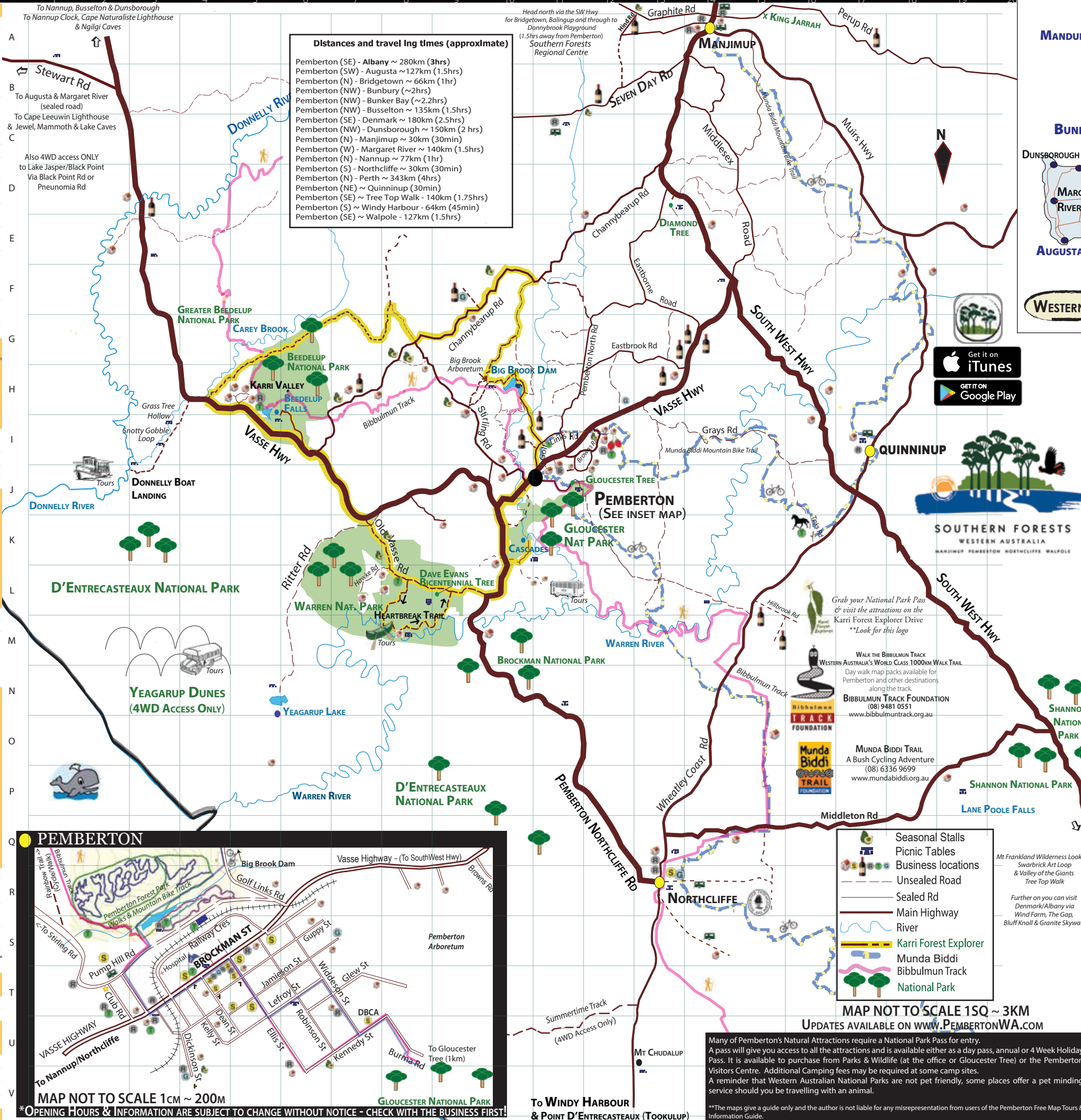


# OTHER SERVICES



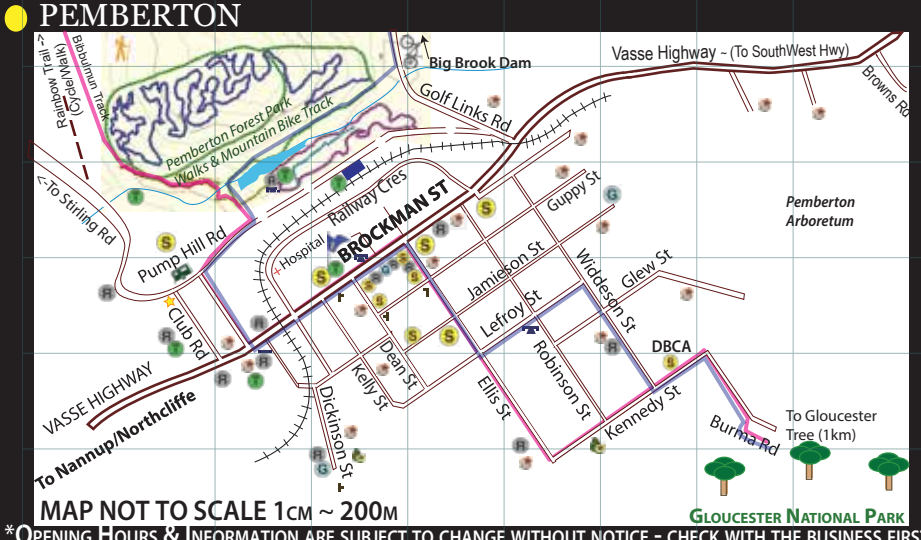
Loc	Business Name	Details
<b>Arts, Community &amp; Tourist Information</b>		
T4	Pemberton Visitor Centre ☎9776 1133 www.pembertonvisitor.com.au	Open 7 days Winter 9:30am - 4pm Summer 9am - 5pm
A14	Manjimup Visitor Centre ☎9771 1831 www.manjimupwa.com	Open 9am - 5pm Mon - Fri 9am - 4pm Sat
R13	Northcliffe Visitor Centre & Public Library ☎9776 7203 www.northcliffvisitorcentre.com.au	Open 7 days 9am-4pm
U7	Department of Parks & Wildlife Donnelly District Office ☎9776 1207 Pemberton Accommodation Association ~ www.pembertonstay.com.au Pemberton Arts Group ~ www.pembertonartsgroup.org.au ☎9776 0252 Pemberton Chamber of Commerce & Industry PembertonCCI@gmail.com	
T4	Pemberton Community Resource Centre ☎9776 1745	9am - 4pm Mon & Fri 9am - 2pm, Tue, Wed, Thurs
R13	Southern Forest Arts ☎9776 7203 www.SouthernForestArts.com.au Southern Forest Lifestyle (online mag) ~ www.SFLifestyle.com.au	
T5	Anglican / Uniting Services 1st, 3rd & 5th Sunday 11am; 2nd & 4th Sunday 10:30am at the Uniting Church	
T4	Catholic Church Services 1st, 3rd & 5th Sunday 8:30am; 2nd & 4th Sunday 10:30am at Sacred Heart Church	
S4	Pemberton Library (RSL Hall) Open 1pm - 5pm Mon, 9am - 1:30pm Wed, 10am - 12:30pm Fri & 9am - 12pm Sat	
100.0 FM at attractions on the Karri Forest Explorer Drive		
<b>Banking</b>		
T4	Bankwest (Brockman St) 24hr ATM ☎9776 4300	9:30am - 4pm Mon, Wed & Thurs 10am - 4pm Tues 9:30am - 5pm Fri Closed Lunch 12:30 - 1:30pm
T5	All Major Banks (Open 7 days) (Pemberton Post & Newsagency) ☎9776 1034	8am - 5pm Mon-Fri 8am - 1pm Sat 8am - 11am Sun & PHols
<b>Emergency Contacts (Dial 000 for Emergency)</b>		
T5	Police ☎9776 1202	
T3	Hospital ☎9776 4000 Pemberton ☎9772 5200 Manjimup	
T4	Pemberton Medical Centre ☎9776 1101	
T4	Pemberton Pharmacy ☎9776 1054	
<b>Fishing &amp; Camping Supplies</b>		
S5	Pemberton Garage (24 Hour Fuel Access) ☎9776 1288	7am - 6pm Mon-Fri 7am-1pm Sat & 8am-1pm Sun
T4	Pemberton General Store & Hardware ☎ 9776 1151	Open 7 days 7:30am - 7:30pm
T2	Pemberton Caravan Park - Waste Dump Station fee applies ☎9776 1300	Open 7 days 8am-6pm
U3	WA Wilderness; Camping hire ☎0427133335 Freshwater and Marron Fisheries License available online Visit <a href="http://secure.fish.wa.gov.au/fish/">secure.fish.wa.gov.au/fish/</a>	
<b>Fuel &amp; Repairs</b>		
Munda Biddi Bike Mechanics are available SMS ☎0427133335		
S5	Pemberton Garage ☎9776 1288 ~ Now 24 Hour Fuel Access	7am - 6pm Mon-Fri 7am - 1pm Sat 8am - 1pm Sun
☎	Southern Forest Hire Cars ☎0499 014 016	Bookings Essential
<b>Groceries, Food &amp; Drink</b>		
T5	Abundant Health (Healthfood shop) ☎0414 263 503	Mon - Wed From 10am
T4	'Ernie's' IGA Supermarket ☎9776 1264	8am - 6pm Mon - Sat 9am - 6pm Sun
S5	Fox Bros Butchers ☎9776 1294	7am-5pm Mon-Fri 6:30-12:30pm Sat
V4	Holy Smoke Cafe ☎9776 0712	Open 7 days 9:30am - 3:30pm
T4	Pemberton General Store, Hardware, Clothing & DVD Hire ☎9776 1151	Open 7 days 7:30am - 7:30pm
T5	Pemberton Hotel Bottle Shop ☎9776 1017	10am-10pm Mon-Sat 12pm - 8pm Sun
T4	Pemberton Liquor Barons ☎9776 1161	10am - 7pm Mon - Sat
<b>Hair/Beauty &amp; Massage</b>		
T5	Elle's Hot Stone Remedial Massage & Craniocacral Therapy ☎9776 0516	Open Tues - Sat by Appointment
T5	Headquarters for Hair ☎9776 1255	9am-5pm Mon-Fri 9am-12pm Sat
T5	Rose Bee Beauty Therapy ☎9776 1255	Bookings by Appointment
T4	Off the Fringe Hair Studio ☎9776 0088 / ☎043 854 1118	Walk ins welcome. 9am-late Mon-Fri ~ Sat by Appointment
<b>I.T. &amp; Computer Repairs</b>		
☎	Manover IT ☎0403 004 254	For all your computer needs
<b>Laundromat</b>		
S5	Brockman St (Next to Butchers)	6am-7pm daily
<b>Real Estate</b>		
T4	LJ Hooker Pemberton ☎0418 955 395 ☎9776 0000	9am-5pm Mon-Fri Sat 9-1pm
<b>Weddings</b>		
☎	Renata's Celebrations ☎0488 76 0426	Civil Marriage Celebrant
☎	Mel's Photography ☎9776 0341 www.SouthernForestWeddings.com.au	Photographer Directory
Visit <a href="http://www.PembertonWA.com">www.PembertonWA.com</a> for updates		

# FREE PEMBERTON MAP



## HAVE YOU DISCOVERED?

<b>Our 3 Famous Climbing Trees</b>		☐ Dave Evans Bicentennial Tree (75m) L9
		☐ Diamond Tree (51m) D13
		☐ Gloucester Tree (61m) U9
<b>National Parks</b>		☐ Greater Beedelup
		☐ Brockman
		☐ D'Entrecasteaux
		☐ Gloucester
		☐ Hawke
		☐ Shannon
		☐ Warren
<b>State Forests</b>		☐ Big Brook Arboretum H9
		☐ Big Brook
		☐ Pemberton Arboretum
		☐ Pemberton Forest Park
<b>Waterfalls, Rivers &amp; Lakes</b>		☐ Beedelup Falls I6
		☐ Big Brook Dam H10
		☐ Cascades K10
		☐ Donnelly River C11
		☐ Fantys Pool H5
		☐ Lake Beedelup D1
		☐ Lake Jasper S3
		☐ Lefroy Brook N6
		☐ Pemberton Pool
		☐ Warren River
		☐ Yeagarup Lake
<b>Forest Drives</b>		☐ Great Forest Trees Drive (Shannon National Park) O21
		☐ Karri Forest Explorer Drive
		☐ Moons Crossing (Burma Rd) L14
		☐ Windy Harbour (via Northcliffe)
<b>Bush Walks</b>		☐ Bibbulmun Track
		☐ Bicentennial Tree to Warren Lookout (2.4km return)
		☐ Big Brook Dam (4km sealed)
		☐ Gloucester Tree Walk from town GPO (6km return)
		☐ Gloucester Tree to Cascades (12km return via Bibbulmun Track)
		☐ Karri Valley/Beedelup Falls walk (4km or 5km loop)
		☐ Pemberton Forest Park (2km)
		☐ Town Walk via Cemetery
		☐ Warren River Loop Walk (10km)
<b>Cycle Trails</b>		☐ Munda Biddi Trail
		☐ Boorara Championship Trail
		☐ Northcliffe Forest Park
		☐ Pemberton Mountain Bike Park
<b>Other Treasures</b>		☐ Black Point D1
		☐ Old growth Karri Forests
		☐ Pemberton Hydroelectricity Scheme & Pemberton Pool L9
		☐ Pemberton Streetscape
		☐ Understory Art & Nature Trail
		☐ Manjimup Timber Park Playground & Slide A14
		☐ Mount Chudalup U13
		☐ Tookulup, Windy Harbour V12
		☐ Lighthouse & Salmon Beach
		☐ Yeagarup Sand Dunes N5



Many of Pemberton's Natural Attractions require a National Park Pass for entry. A pass will give you access to all the attractions and is available either as a day pass, annual or 4 Week Holiday Pass. It is available to purchase from Parks & Wildlife (at the office or Gloucester Tree) or the Pemberton Visitors Centre. Additional Camping fees may be required at some camp sites. A reminder that Western Australian National Parks are not pet friendly, some places offer a pet minding service should you be travelling with an animal.

\*\*The maps give a guide only and the author is not liable for any misrepresentation from users of the Pemberton Free Map Tours & Information Guide.